

**Model ATP10K100MM1**  
**Field Generator**  
**3000 Watts CW**  
**10kHz–100MHz**

The AR RF/Microwave Instrumentation Model ATP10K100MM1 is a broadband, high power RF Field Generator. The unit is capable of generating intense fields in a large volume over a wide frequency range. Twin conductor transmission lines produce both E (electric) and H (magnetic) fields (see Figure 1).

The ATP10K100MM1 is a balanced parallel conductor transmission line that is 2.4 meters long and 1.0 meter wide. It has been designed to match free space impedance of 377 ohms, which results in extremely efficient production of RF fields. Matching transformer and load resistors are built in and provide excellent VSWR characteristics over a frequency range of 10 kHz to 100 MHz. To achieve maximum flexibility in use, the ATP10K100MM1 must be rotated and the height adjusted to accommodate the unit under test. Items small enough to fit between the elements can be placed on a pedestal or table and the ATP10K100MM1 positioned to surround them. For larger items, the height and angle of the radiating elements must be changed for maximum field strength.

This M1 version of the ATP10K100M comes without a stand, therefore the customer must provide for proper positioning to optimize their test set-up.

**SPECIFICATIONS**

POWER INPUT, CW .....	3000 watts maximum
FREQUENCY RANGE .....	10 kHz - 100 MHz
INPUT IMPEDANCE.....	50 ohms
VSWR .....	2.0:1 maximum 10 kHz - 100 MHz 6:1 maximum 10 - 20 kHz above 1 KW input power
ELECTRIC FIELD INTENSITY.....	See Graph.
RF INPUT CONNECTOR .....	Type 7-16 DIN female
COOLING.....	Natural convection to 40° C ambient temperature
WEIGHT .....	41 kg (90 lb)
SIZE (WxHxD).....	2.33 x 1.22 x 0.16 meters 92 x 48 x 6.5 inches

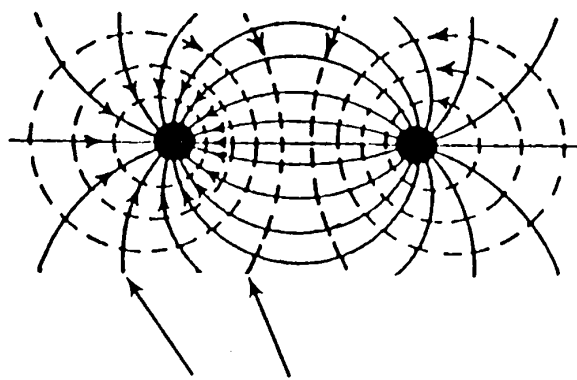
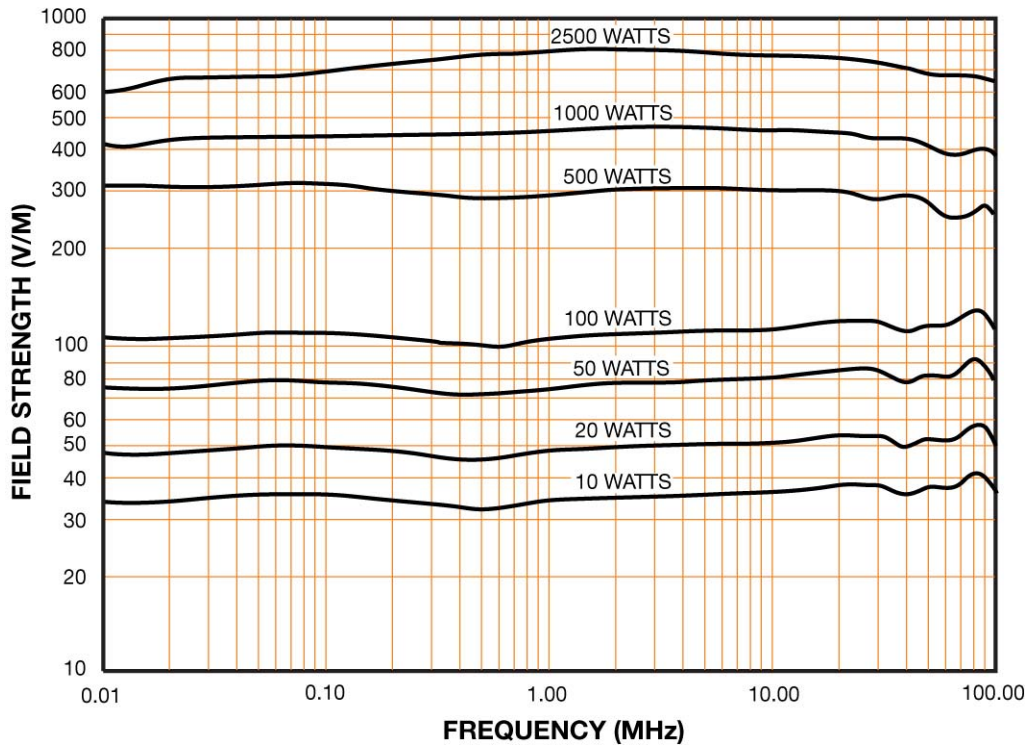


Fig. 1 E and H Field Pattern

**FIELD STRENGTH vs. FREQUENCY  
MEASURED BETWEEN CONDUCTORS**



**FIELD STRENGTH vs. FREQUENCY  
MEASURED AT 1 METER**

